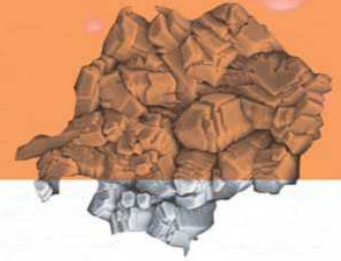


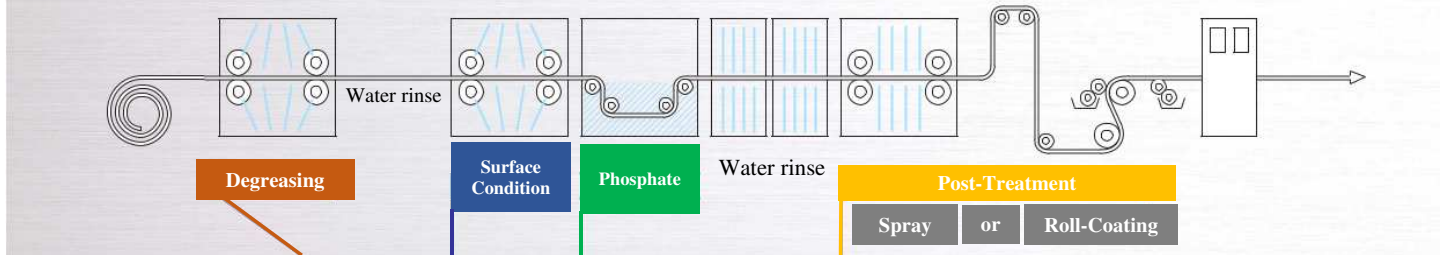
# Chemicals for Pre-Coat Metal

Used for Pre-Treatment for color paint steel sheets used in construction.

Application ;  
Pre-Coat Metal ( PCM )



Process chart example of CCL ( Coil Coating Line)



**Example of Combination**

Chemical Type	Products	Remark
Alkaline Degreasing	FC-E6000 series	
Additives	AD-E5654, AD-F50	Improve degreasing capacity

**Example of Combination**

Purpose	Variation	Surface Condition	Phosphate	Post-Treatment	Remark
PCM Base	①	-	-	CT-E200 series	Chrome-Free Sealing
	②	-	-	ZM-1300 series, PM-283	Chromate
	③	PL-4015	-	ZM-1300 series, PM-283	Chromate
	④	PL-ZNT, PL-XK	PB-3300	LN-62	
Adhesion & Clear Paint Base	⑤	-	-	PM-283, PM-286	Chromate

**Details**

Application	Type	Product	System	Temp. °C	Time s	PMT °C	Remark
Degreasing	FINECLEANER	FC-E6000 series	Spray, Dip	45 ~ 65	1 ~ 10	-	Re-make up depend on Oil-Concentration
	ADDITIVE	AD-5659	Spray, Dip	45 ~ 65	-	-	Add to Degreasing solution
		Other AD aseries	Spray, Dip	45 ~ 65	-	-	Add to Degreasing solution
Paint Base	PALENE	PL-4015	Spray, Dip	RT	2 ~ 10	-	For Hot-Galvanized steel sheet
	ZINCHROM	ZM-1300AN	Roll-Coater	RT	-	60 ~ 80	Chromate
	PALCHROM	PM-283	Roll-Coater	RT	-	60 ~ 80	Chromate for clear paint
	PALENE	PL-ZNT	Spray, Dip	RT~40	1 ~ 5	-	Ti type, Re-make up every day
		PL-XK	Spray, Dip	RT~40	1 ~ 5	-	Zn type, Re-make up sometime
	PALBOND	PB-3300	Spray, Dip	65 ~ 75	5 ~ 15	-	Phosphate
	PALENE	LN-61	Spray, Dip	40 ~ 70	2 ~ 10	-	Post-Treatment of Chromate type
PALCOAT	CT-E*** series	Roll-Coater	RT	-	60 ~ 80	Chrome-Free, for various Zn plating , SUS, AL	
Adhesion & Clear Paint Base	PALCHROM	PM-283	Roll-Coater	RT	-	60 ~ 80	For SUS, AL
		PM-286	Roll-Coater	RT	-	60 ~ 80	For SUS, Clear paint

The above chemicals are represented example. We can suggest the most suitable chemicals for each customer.

Please contact us at first.